



PHOENIX[®]
DURABILITY X DESIGN™

Conveyo™ (CVO)

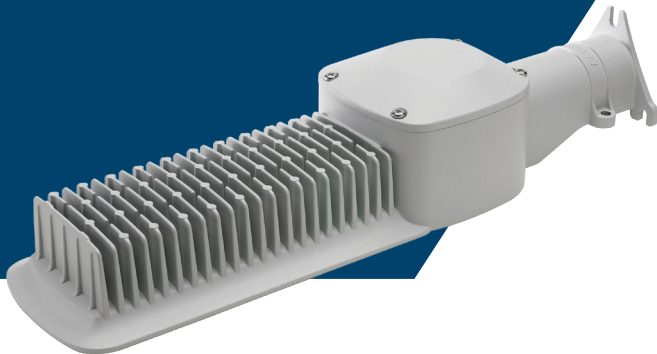
LED Conveyor Belt Light

50W fixture delivers 6000 lumens

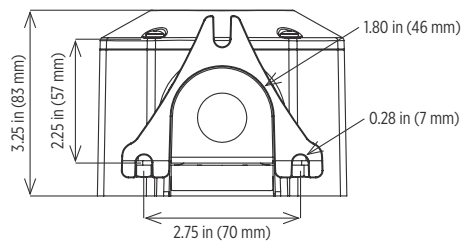
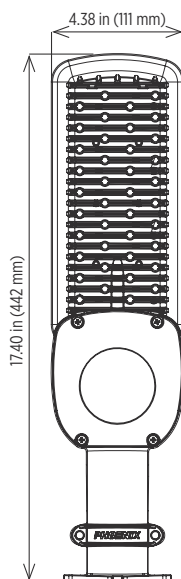
Economic yet durable design

Primary applications include conveyor belts, narrow pathways
as well as general wall or pole mount lighting

LED technology increases efficiency, eliminates maintenance and supports green initiatives



Dimensions



Specifications

Construction	Marine grade, cast aluminum housing
Finish	Gray polyester powder coat
Hardware	Marine grade 316 stainless steel
Lens	UV- and impact-resistant PMMA Type II optic Full cutoff, zero uplight
Light source	Cree XP-L light emitting diodes (LED), 6000 lumens CCT 5000K Cree XP-L warm white LED option (WW), 4400 lumens CCT 2700K Nichia 219B amber LED option (AM), 3500 lumens 610 nm 50W 50,000 hour rated life
Power source	120-277V, 50-60Hz Fully potted Replaceable Overload, over-voltage, over-temperature and short-circuit protection
Power factor	>.9 at 120V
Wiring	Stranded wire leads Water-tight grommet - standard Water-tight cord grip (MAR) Water-tight conduit hub (HAZ)
Ambient operating temperature	-40°C to +50°C
Mounting	Wall or pole mount capable Accommodates NPS 1.25 inch (1.66 inch OD)/DN 32 mm (42 mm OD)
Fixture weight	4.0 lb (1.8 kg)
Warranty	3 year

Contact factory for IES files

Compliances

UL/cUL Listed to:

- UL 1598 Suitable for Wet Locations
- UL 1598A Marine Outside Type (Saltwater)
- UL 844 Hazardous Location
 - Class I, Division 2 Groups A, B, C, D
 - Class II, Division 2 Groups F, G
 - Class III
- CSA C22.2 No. 250.0
- CSA C22.2 No. 137

CE

International Dark Sky Association approved (AM & WW options)

IP63 rated (wall mount)

IP65 rated (pole mount)

Ordering Information

Example: CVO-48LED

Fixture	Wattage	Options
CVO	48LED	AM ¹ HAZ MAR WW ¹

Wattage

48LED 50W, 6000 lumens

Options

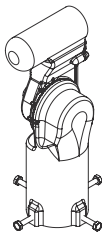
AM¹ Amber LEDs, 3500 lumens
HAZ UL 844 listed
MAR UL 1598A Marine Outside Type (Saltwater) listed
WW¹ Warm white LEDs, 4400 lumens

Notes

1 International Dark Sky Association approved

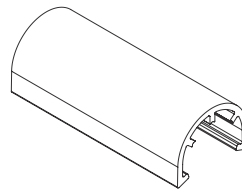
Special Projects: We may be able to accommodate your special projects, so please don't hesitate to ask about additional options. Minimum order quantities and/or extended lead times will apply. Contact your Phoenix representative with specific inquiries.

Accessories (order separately)



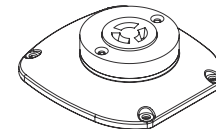
Adjustable Tenon Mount Kit

CVO-TN-MNT-ADJ Adjustable in 5° increments
Accommodates NPS 1.00 inch pipe (1.32 inch OD)/DN 25 mm (34 mm OD), NPS 1.25 inch pipe (1.66 inch OD)/DN 32 mm (42 mm OD), NPS 1.50 inch pipe (1.90 inch OD)/DN 40 mm (48 mm OD) and NPS 2.00 inch pipe (2.38 inch OD)/DN 50 mm (60 mm OD)



One Inch Adaptor Bracket

CVO-AB1



Photocell Receptacle Kit

CVO-PCR

Note: When installed, fixture will be IP63 rated; not suitable for use with HAZ or MAR options

Lens Kits

CVO-LNS-100 (100° lens kit)

Note: Contact factory for additional optic options



Conveyo™ (CVO)

LED Conveyor Belt Light

PHOENIX[®]
DURABILITY X DESIGN™

Cover photo: Conveyo fixture illuminating conveyor belt at an asphalt plant.

Product design and specifications are subject to change without notice. The most current version of this specification sheet can be found on our website: www.phoenixlighting.com.



Phoenix Products Company Inc. 8711 West Port Avenue Milwaukee, WI 53224 USA
Phone: +1 414.973.3300 Toll Free: 800.438.1214 Fax: +1 414.973.3210 www.phoenixlighting.com

N5499970H
04.02.18